

STATEMENT OF QUALIFICATIONS



14250 Beadle Lake Road, Suite 150
Battle Creek, MI 49014
Phone: (269) 962-5127 Fax: (269) 962-8310
www.CEI-bc.com

“ENGINEERING QUALITY OF LIFE”

I. COMPANY BACKGROUND

Civil Engineers, Inc. (CEI) is a professional engineering firm striving for total client satisfaction, public safety, and preserving our natural resources. CEI engineers all types of infrastructure projects, for both municipal and private clients. We have been solving problems in unique cost effective ways for more than one and a half decades. Many of our projects involve innovative designs that help preserve the environment. With a qualified staff and the right equipment, we will use our knowledge, imagination, and common sense to develop solutions to your engineering needs.

CEI has successfully completed many water resource projects. We have designed award winning storm water management projects, modeled domestic water supply networks, and engineered wastewater treatment systems of all sizes. Whether a client needs a set of drainage rules revised, plans reviewed, or a million-dollar storm sewer project designed they can trust us because we have "been there & done that". If a Wellhead Protection Program, a Water Reliability Study, or a water main extension is needed we can offer the kind of experience you deserve to get the job done. When it comes to wastewater collection and treatment CEI has not only engineered typical systems we have also designed many alternative facilities. Gravity sewer, lift stations, lagoons, constructed wetlands, and pressurized subsurface effluent application are among the projects that we can design for our clients.

Transportation related engineering is a daily task for CEI. We have engineered multiple road improvements using federal transportation funds that require DOT management. We frequently design road extensions and road widening projects using our computer design software and AASHTO criteria. Subdivision road design is common at our firm along with road drainage systems. Small bridge design and maintenance related bridgework recommendations are included in what we offer. Whether you need a resurfacing project engineered or a new by-pass designed we can offer our services.

When it comes to dealing with Environmental Agencies, hiring CEI can be your best decision. We have successfully obtained permits to mitigate destroyed wetlands and fill in floodplains. We have even prepared a feasibility report for a wetlands banking program. CEI can delineate most wetlands and can design new wetlands.

CEI is a great choice for your civil and environmental engineering needs. We have the experience and diversity that is needed for almost any community engineering related project. We will listen to your needs and develop a solution with you. Our team of professionals is anxious to prove this to you.

II. SERVICES OFFERED

Water Resources

- **Domestic Water Supply**

- Water Main Networks
- Reliability Studies
- System Expansions
- Wellhead Protection
- Computer Modeling
- Mapping
- Treatment Facilities



- **Waste Water**

- Sewerage Systems
- Treatment Plants
- Community Systems
- Onsite Alternative Systems
- Synthetic Wetlands Treatment
- Feasibility Studies



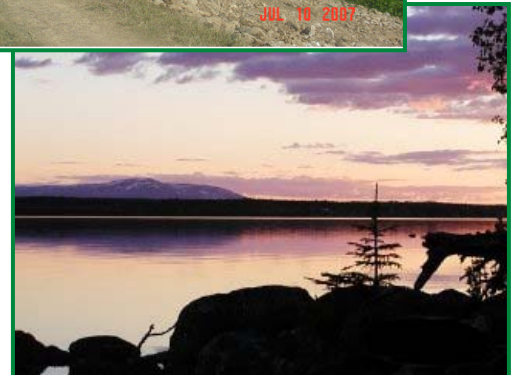
- **Storm Water**

- Rural and Urban County Drains
- Storm Sewer Systems
- Storage & Treatment Systems
- Watershed Management
- Low Impact Development
- Best Management Practices



- **Lakes and Streams**

- Lake Levels
- Bank Stabilization
- Dredging
- Grant Writing



II. SERVICES OFFERED

Transportation

- **Roads**

- County Roads
- MDOT Regulated Roads
- Subdivisions
- Grant Writing
- Private Roads
- Industrial Parks



- **Bridges**

- Precast Structures
- Culverts
- DNRE Permitting
- County Bridges



- **Non-motorized Paths**

- Bike Paths
- Sidewalks
- Park Trails
- Wetland Boardwalks
- Low Impact Development
- Best Management Practices



Professional Engineer

II. SERVICES OFFERED

Municipal Consulting

- **Financial Support**

- Grant Research and Applications
- Improvement Cost Opinions
- Feasibility Studies
- Special Assessment Support

- **Plan Review**

- Site Plans
- Utility Extensions
- MDOT Projects

- **Permitting**

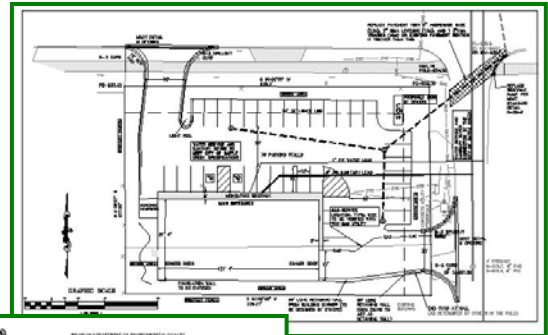
- DEQ Water and Sewer
- Wellhead Protection Plans
- Water Reliability Studies
- Master Plans
- MS4 NPDES

- **Environment**

- Wetland Mitigations
- Wetland Delineations
- Floodplain Determinations
- DNRE Permitting
- Streams and Rivers
- Lake Management

- **Mapping**

- Water Systems
- Sanitary Sewer
- Storm Sewer
- Parcel Mapping
- Zoning Maps



DEQ
 DIVISION OF ENVIRONMENTAL QUALITY
 WATER DIVISION
PERMIT APPLICATION FOR WASTEWATER SYSTEMS
 (2010) (Rev. 12/10) (This form is subject to the Public Access to Information Act, R.S. 17:28)
 This application is subject to the provisions of the Water Pollution Control Act, R.S. 22:1-22:101, and the Department of Environmental Quality's rules for wastewater systems, 17AS100-1-1 through 17AS100-1-10.

1. Municipality or Organization, and Address City of Orange City 200 N. Orange City Orange City, MS 38854	Date of Issuance (MM/DD/YYYY)
2. Name of Contact Person (Name and Title) Name: _____ Title: _____	
3. Project Name (Name and Location) South Broadway Reconstruction	4. Project Location Village of Orange City
5. County Name (Name) Benton County	

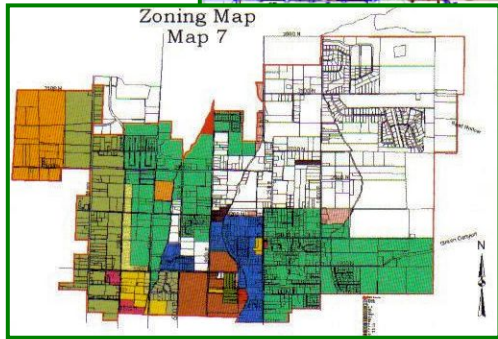
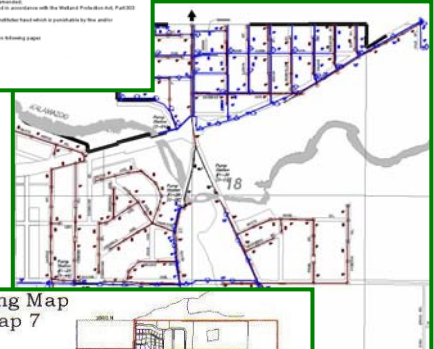
ISSUED UNDER THE AUTHORITY OF THE DIRECTOR OF THE DEPARTMENT OF ENVIRONMENTAL QUALITY

Issued by: _____
 Forwarded by: _____

This box is checked and attached special conditions.

Instructions: Complete items 1 through 5 below and 6 through 17 on the following pages of this application. Print or type all information requested for applications. All completed applications must be submitted to the Director of Environmental Quality, Department of Environmental Quality, 1000 North State Street, Jackson, Mississippi 39201.

Please Note:
 6. This permit only authorizes the construction, alteration, addition, or replacement of the wastewater system described herein and is issued under the authority of Part 61 of Act 667, P.A. 1996, as amended. Issuance by the applicant's municipality is required before starting work. This application is subject to the provisions of the Water Pollution Control Act, R.S. 22:1-22:101, and the Department of Environmental Quality's rules for wastewater systems, 17AS100-1-1 through 17AS100-1-10.
 7. The applicant must file this application with the Department of Environmental Quality, 1000 North State Street, Jackson, Mississippi 39201, and pay the application fee of \$1000.00.
 8. Application fees will be paid directly to the Department of Environmental Quality, 1000 North State Street, Jackson, Mississippi 39201, and will not be refunded if the application is not approved.
 9. All construction activities must be completed in accordance with the requirements of Part 61 of Act 667, P.A. 1996, as amended.
 10. All construction activities must be completed in accordance with the requirements of Part 61 of Act 667, P.A. 1996, as amended.
 11. All construction activities must be completed in accordance with the requirements of Part 61 of Act 667, P.A. 1996, as amended.
 12. All construction activities must be completed in accordance with the requirements of Part 61 of Act 667, P.A. 1996, as amended.
 13. All construction activities must be completed in accordance with the requirements of Part 61 of Act 667, P.A. 1996, as amended.
 14. All construction activities must be completed in accordance with the requirements of Part 61 of Act 667, P.A. 1996, as amended.
 15. All construction activities must be completed in accordance with the requirements of Part 61 of Act 667, P.A. 1996, as amended.
 16. All construction activities must be completed in accordance with the requirements of Part 61 of Act 667, P.A. 1996, as amended.
 17. All construction activities must be completed in accordance with the requirements of Part 61 of Act 667, P.A. 1996, as amended.



III. EXAMPLES OF AWARD WINNING PROJECTS

2008 American Society of Civil Engineers, Southwest Michigan Branch

Award received: 2008 Outstanding Civil Engineering Achievement – Quality of Life

Awarded for: Reading Sewerage Project

Client: City of Reading

2008 American Public Works Association, Southwest Michigan Branch

Award received: Environmental – Less than \$2 Million

Awarded for: Reading Sewerage Project

Client: City of Reading

Award received: Transportation Less than \$500,000

Awarded for: I-94 Service Road

Client: Calhoun County Road Commission

2006 American Public Works Association, Southwest Michigan Branch

Award received: Environmental - Project of The Year

Awarded for: Pennfield Drain #2,

Client: Calhoun County Drain Commissioner

Award received: Structure - Project of The Year

Awarded for: Turtle Lake Culvert

Client: Calhoun County Drain Commissioner

Award received: Transportation - Honorable Mention

Awarded for: Broadway Improvements

Client: Village Of Union City

2005 Michigan Association of County Drain Commissioners

Award received: Water Quality Award - Honorable Mention

Awarded for: Charlton Park

Client: Barry County Drain Commissioner

2004 American Public Works Association, South West Michigan Branch Award

Award received: Quality of Life - Honorable Mention

Awarded for: Calhoun County Fair Grounds, East Access Road

Client: Calhoun County Road Commission

2004 Michigan Association of County Drain Commissioners

Award received: Water Quality Award - Honorable Mention

Awarded for: Speeds Lake

Client: Calhoun County Drain Commissioner

2003 Michigan Association of County Drain Commissioners

Award received: Water Quality Award - Project of the Year

Awarded for: Homer Lake

Client: Homer Lake Management Board

V. RESUMÉS OF KEY PERSONNEL

Randy A. Ramsey, P.E.

Justian W. Crane, P.E.

Mark Crider, E.I.T.

John J. Stahl III

Clint Burdick

John Sarma

Professional Engineering

RESUMÉ OF

RANDY A. RAMSEY, P.E. PRINCIPLE ENGINEER

Licenses and Certifications:

- Professional Engineer in Michigan and Indiana
- Certificates of Completion for Project Risk Management, Wetlands Permitting, Onsite Wastewater, and Stormwater Permitting.

Education:

- Bachelor of Science Degree in Civil Engineering “with honors” from Tri State University.

Presentations:

- Spoke at five (5) wastewater conferences on the topic of constructed wetlands for wastewater treatment.
- Several project summaries at awards banquets.
- Rain Gardens 101 at the Southwest District Meeting of the Michigan Association of County Drain Commissioners.
- Authored several environmental articles for various magazines.

Awards:

- Various Innovation and Excellence awards for water quality from the Michigan Association of County Drain Commissioners.
- Two Project of The Year Awards from the Southwest District of American Public Works Association.
- Above and Beyond Award – Battle Creek Area Association of Realtors
- Creditable Work in Civil Engineering Award – Indiana Section of the American Society of Civil Engineers

Experience:

- Civil Engineers, Inc.; 1993 - Present
 - Project engineering and management of road, sewer, water, wastewater and drainage projects.
 - Feasibility studies, design, construction engineering, and operation/maintenance trouble shooting infrastructure projects for governmental agencies.
 - Administration, marketing, and personnel management.
- King, Ryan and Associates; 1990-1993
 - Project engineering of residential developments, site plans and municipal infrastructure improvement projects.
 - Developed engineering department.
- Hatfield Engineering, Inc.; 1986-1990
 - Road, Sewer, and Airport Engineering
 - Bridge Construction Engineering
 - Construction Testing
- City of Battle Creek; 1983-1985
 - Assist with design and construction of park projects and road improvements.

Affiliations:

- National Society of Professional Engineers • American Society of Civil Engineers • Michigan Water Environment Association • Michigan Association of County Drain Commissioners

RESUMÉ OF

JUSTIAN W. CRANE, P.E. PROJECT ENGINEER

EDUCATION:

Michigan Technological University, B.S. Civil Engineering (Magna Cum Laude), 2003

PROFESSIONAL HIGHLIGHTS:

Mr. Crane has been employed with CEI since 2004. His expertise is in county drain projects, local road reconstruction projects, subdivision design, site plan design, construction inspection, and MDOT construction administration. Prior to his employment with CEI, Mr. Crane worked for Nummelin Testing Services of Waunakee, Wisconsin.

KEY PROJECTS:

Transportation

South Broadway, Union City – (MDOT) Design, Construction (using Field Manager)
Linden Street, Marshall – (MDOT) Road and Drainage Design
Street Reconstruction, Springfield – Design on Four Local Streets

County Drains

Pennfield Drain #2, Battle Creek – Construction Inspection
L.A. Wood Drainage, Quincy – Prepared a Report and Construction Drawings
Delton Village Drain, Delton – Drainage Master Plan, Sediment Basin Design
Gildart and Mud Lake Drain, Olivet – Design on 2.5 Mile County Drain

Subdivision

Briarwood, Marshall – Design and Construction (Public Water and Sewer)
Country Hills #4, Marshall - Design and Construction
Estates of Windamere, Battle Creek – Design (Public Water and Sewer)
Blackhawk Hills, Battle Creek – Design and Construction (Public Sewer)

Site Development

Goodwill, Hastings – Site Design
Family Dollar, Union City – Parking Lot and Storm Drainage
Nottke's Storage Building, Battle Creek – Site Design

CONTINUED EDUCATION:

Certified Construction Site Storm Water Operator (C-11174)
Michigan Onsite Wastewater Training and Education Center, Soils Training Workshop
Michigan Engineers Resource Library (MERL), Training Workshop

RESUMÉ OF

MARK CRIDER, E.I.T.
ASSISTANT PROJECT ENGINEER

EDUCATION:

Western Michigan University, B.S. Civil Engineering (Cum Laude), 2009

KEY PROJECTS:

County Drains

6½ Mile Road Drain, Battle Creek – Project Design and Layout
Frey Drain, Leroy Township– Project Design
Pioneer Acres Drain, Battle Creek – Project Design

Site Development

Baxter Funeral Home, Battle Creek – Site Design

Reports

Water Reliability Study for the Village of Athens

CONTINUED EDUCATION:

MDOT certified Soils Density Tester
Training in Radiation Safety and Regulatory Specifications

RESUMÉ OF

JOHN J. STAHL III **RESIDENT PROJECT REPRESENTATIVE**

EDUCATION:

Monroe County Community College, Monroe, MI, Surveying, Trigonometry, and Technical Math

Lenawee Vocational-Technical Center, Adrian, MI, AutoCAD Drafting

PROFESSIONAL HIGHLIGHTS:

Mr. Stahl has been employed in the engineering field since 1978. He joined Civil Engineers Inc. in 2005. Civil Engineers Inc. had also employed Mr. Stahl from 1996 thru 1998. His expertise is in field surveying, construction quality assurance, construction inspection, construction management, and AutoCAD drafting. His experience includes both layout and inspection of various civil engineering projects. Prior to his association with Civil Engineers Inc., Mr. Stahl was a Civil Engineering Technician for Poggemeyer Design Group, Feller, Finch & Associates, Farham Wirries & Berning, and Hull & Associates in the Toledo, Ohio area.

KEY PROJECTS:

Wastewater

Waldron Lagoon and Force Main, Waldron, MI Layout and Resident Project Representative (USDA RD)

Camden Sewer Rehabilitation, Camden, MI Resident Project Representative (USDA RD)

Lime Lake Sewer, Prattville, MI Preliminary Design (USDA RD)

Haylett Street Extension, Hillsdale, MI Layout and Resident Project Representative

Water

Reading Water Improvements, City of Reading, Layout and Resident Project Representative (USDA RD)

Pennfield Water Expansion, Pennfield Charter Township, MI Layout and Resident Project Representative

Scio Township Water Project, Chelsea, MI, Layout (USDA RD)

Pennfield Water Tower, Pennfield Charter Township, MI Layout

Transportation

Wagner Street, Battle Creek, MI Layout

Bacon Street, Hillsdale, MI Layout and Resident Project Representative

Spring Street, Hillsdale, MI Layout and Resident Project Representative

Wildwood Street, Jackson, MI Layout

RESUMÉ OF

CLINT BURDICK ENGINEERING TECHNICIAN

EDUCATION:

Bachelor of Science with group major in Engineering and Geology from Calvin College, 1999

KEY PROJECTS:

Topographic Survey and Construction Staking -

- *I-94 Service Road* – 1,800 feet of 3-lane MDOT roadway and intersections.
- *Linden Street* – Road reconstruction and 1,600 feet of storm sewer.
- *South Broadway* – 1,800 feet of road, sewer and water reconstruction.
- *Athens South Clark St Water Main* – 1,800 feet of new 8” water main.
- *Delton Village Drain* – 4,400 feet of storm sewer with 41 drainage inlets.
- *Springfield 2005 Road Improvements* – 4,500 feet of road reconstruction including 5,800 feet of new curb along four city streets.
- *Marshall Avenue Bridge* – Bridge deck replacement and approach taper work in the City of Marshall.
- *Pennfield High School Water* – 2,600 feet of 12” water main extension to serve new high school and area including 11 new fire hydrants.

Drafting-

- *L.A. Wood Drainage* – County drain improvements and roadway improvements to an existing subdivision in the Village of Quincy.
- *Gildart and Mud Lake Drain* – County drain improvements including 4 road crossing replacements.
- *Dirks Drive* – 1,100 feet of road reconstruction and placement of new sanitary sewer.

Construction Observation (Inspection)-

- *Briarwood Site Condominiums* – 600 feet of new roadway in the City of Marshall including sanitary sewer, watermain, and storm sewer.
- *Oakvale Site Condominiums* – Phase I construction included 750 feet of new roadway in Emmett Township including sanitary sewer, watermain, and storm sewer.

CONTINUED EDUCATION:

Certified Construction Site Stormwater Operator (C-03286)

RESUMÉ OF

JOHN SARMA ENGINEERING TECHNICIAN

EDUCATION:

Associate in Applied Science Degree in Electrical Engineering Technology from Michigan Technological University, Houghton, MI

CONTINUED EDUCATION:

Various specialized training courses related Computer Systems Engineering including CAD/CAM/CAE specialist training

KEY PROJECTS:

Drafting-

- *Delton Village Drain* – See project profile on the following pages
- *Onagon Drain* – See project profile on the following pages
- *I-94 Service Road* - See project profile on the following pages
- *Quail Run* – 4,720 feet of new road and 2,800 feet of storm sewer in a new residential condominium.
- *Blackhawk Hills* – 5,050 feet of road, 6,620 feet of sanitary sewer, and 2,760 feet of storm sewer in a new residential development.
- *Marshall Bridge* – Replacement of a bridge deck in the City of Marshall. Plan preparation included designing road tapers to new bridge deck which required curb replacement and matching existing driveways.
- *Orchard Hills* – New subdivision including 2,200 feet of new roadway including curb and gutter. 2,750 feet of watermain, 2,240 feet of sanitary sewer, and 2,000 feet of storm sewer were also placed. City of Springfield developed the site then sold the completed subdivision to a developer/builder for a profit.
- *Oakvale Site Condominiums* – 1,900 feet of roadway in a new residential development. 2,000 feet of watermain, 2,000 feet of sanitary sewer, and 1,700 feet of storm sewer were also designed.

Municipal Water Systems-

Water Reliability Study for the Village of Athens – Modeling

Water Reliability Study for Pennfield Charter Township – Modeling

AFFILIATIONS:

AutoCAD User Group International (AUGI)

VI. REFERENCES

Michigan Drain Commissioner References CEI Has Worked For:

Allegan County
Becky Rininger
(269) 673-0440

Barry County
Russ Yarger
(269) 945-1385

Branch County
Mike Hard
(517) 279-4310

Calhoun County
Larry Cortright
(269) 781-0790

Eaton County
Dick Brown
(517) 543-3809

Hillsdale County
Bill Word
(517) 437-4181

Kalamazoo County
Pat Crowley
(269) 384-8117